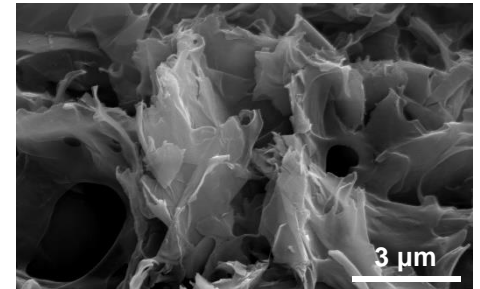
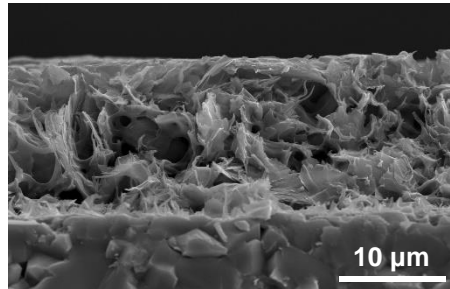
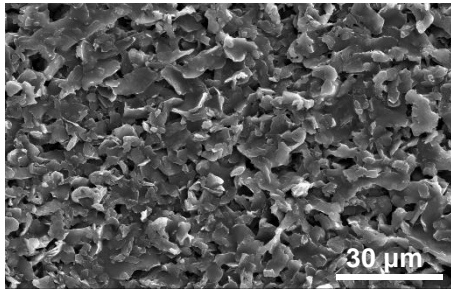
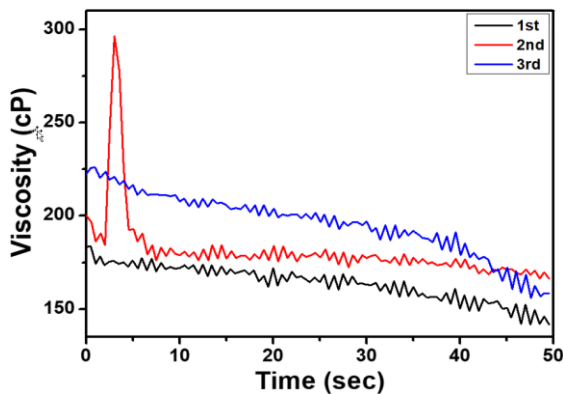


Product Name: Hicon-S

1. SEM Image



2. Viscosity



A. Equipment

- Name of equipment: Viscometer
- Manufacturer: Thermo Electron(Germany)
- Model: Haake VT550

B. Measuring conditions

- Measurement Temp.: 25 °C
- Measurement Method: DIN 53019 / ISO 3219
- Shear Rate: $\dot{\gamma} = 1000$ [1/s]

C. Results

(unit: cP)

Sample	1st	2nd	3rd	Average
Hicon-S	141.6	166.4	158.3	155.5

3. Sheet Resistance & Electrical Conductivity

A. Equipment

- Name of equipment: Low Resistivity Meter
- Manufacturer: Mitsubishi (Japan)
- Model: MCP-T610

B. Measuring conditions

- Measurement Temp: 23°C (laboratory temp.)
- Probe type: ASP type (standard value: 1.002 Ω , measured value: 1.003 Ω)
- Probe specification: 4 point, inter pin distance: 4mm, pin point: 2pi
- Measuring position: Random 5 point
- RCF: 4.532
- Impressed voltage: 10 V
- Measuring range: 1.00E-03~9.00E+07 Ω (up to 9.99E+07 Ω)

C. Results

(unit: $\Omega \cdot \text{cm}$)

Sample	Thickness [cm]	1st	2nd	3rd	4th	5th	Average	Sheet Resistance [at 25 μm]
Hicon-S	0.0030	2.84E-01	2.48E-01	2.24E-01	2.56E-01	2.30E-01	2.49E-01	99.6Ω

4. TGA Analysis

