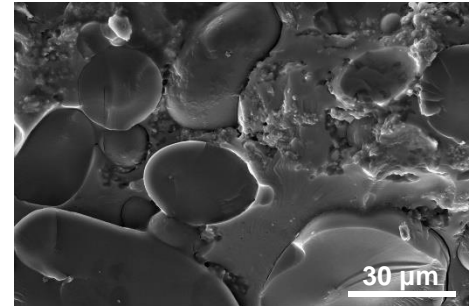
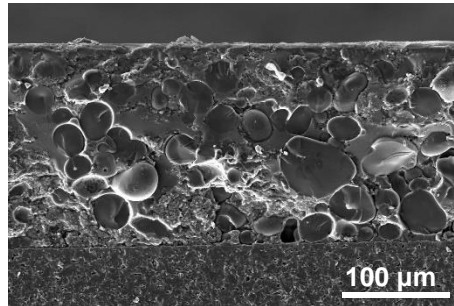
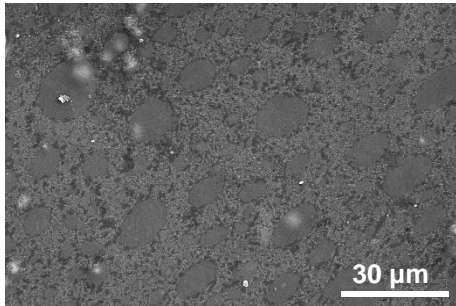
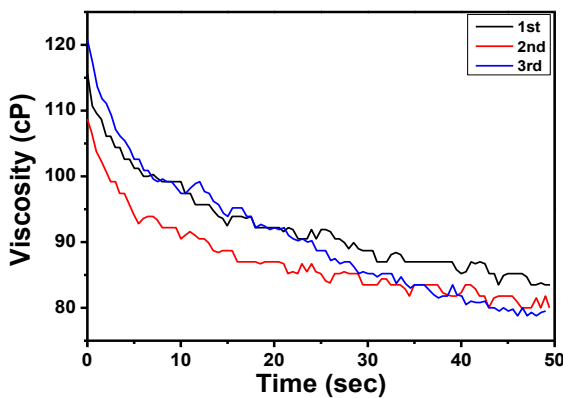


Product Name: Hist-PS

1. SEM Image



2. Viscosity



A. Equipment

- Name of equipment: Viscometer
- Manufacturer: Thermo Electron(Germany)
- Model: Haake VT550

B. Measuring conditions

- Measurement Temp.: 25 °C
- Measurement Method: DIN 53019 / ISO 3219
- Shear Rate: $\gamma = 1000$ [1/s]

C. Results

(unit: cP)

Sample	1st	2nd	3rd	Average
Hist-PS	83.5	80.0	79.5	81.0

3. Sheet Resistance & Electrical Conductivity

A. Equipment

- Name of equipment: High Resistivity Meter
- Manufacturer: Mitsubishi (Japan)
- Model: MCP-HT450

B. Measuring conditions

- Measurement Temp: 23°C (laboratory temp.)
- Probe type: URS type (standard value: $4.97E+08 \Omega$, measured value: $4.98E+08 \Omega$)
- Probe specification: 4 point, inter pin distance: 4mm, pin point: 2pi
- Measuring position: Random 5 point
- RCF:- Impressed voltage: 10 V
- Measuring range: $1.00E-03 \sim 9.00E+07 \Omega$ (up to $9.99E+07 \Omega$)

C. Results

(unit: $\Omega \cdot \text{cm}$)

Sample	Thickness [cm]	1st	2nd	3rd	4th	5th	Average
Hist-PS	0.0140	$2.39E+12$	$1.14E+12$	$4.76E+12$	$4.14E+12$	$1.70E+12$	$2.83E+12$